

Unit 2 Review Evens

2. 710

6. -35

$$\begin{array}{r} 23.5 \\ - 33.5 \\ \hline 10.0 \\ + 12.25 \\ \hline 22.25 \end{array}$$

4. 713

8. $8 - 11 \left(\frac{5}{11} \right)$
 $8 - 5$
 3

$\frac{1}{1} \times \frac{5}{1} = 5$

10. $r = 7$

12. -4

14. ~~10~~ ~~112~~ 10-12

16. 100 cubic in.

18. $14^2 + (\sqrt{60})^2 = c^2$

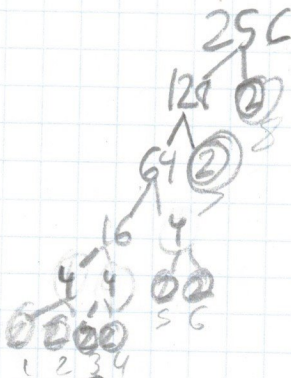
$196 + 60 = c^2$

$\sqrt{256} = c^2$

$16 = c$

$$\begin{array}{r} 14 \\ - 14 \\ \hline 56 \\ + 40 \\ \hline 196 \end{array}$$

$2 \cdot 2 \cdot 2 \cdot 2 = 16$



20. $a^2 + 35^2 = 37^2$

$a^2 + 1225 = 1369$

$\sqrt{a^2} = \sqrt{144}$

$a = 12$

$12^2 + 35^2 = c^2$

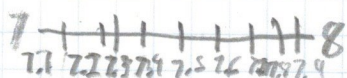
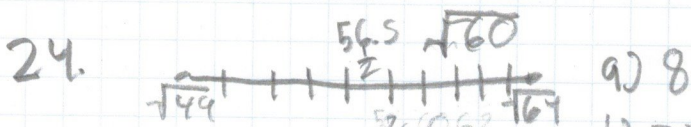
$144 + 1225 = c^2$

$1369 = c^2$

$37 = c$

Unit 3 Review Evens

22. a) Nat, Whole, Integer, Rational
 b) Rational
 c) Irrational
 d) Nat, Whole, Integer, Rational



b) 7.7

$$\begin{array}{r} 4 \\ - 77 \\ \hline 77 \\ + 1539 \\ \hline 5390 \\ + 5390 \\ \hline 5929 \end{array}$$

26. 12 is greater because $\sqrt{88} \approx 9, 9 < 12$

28. $\sqrt{220} > 14.5$, because $\sqrt{220} \approx 14.8, 14.8 > 14.5$

30. $10^2 + 24^2 = 26^2$
 $100 + 576 = 676$
 $676 = 676$
 is a right +

$$\begin{array}{r} 24 \\ \times 24 \\ \hline 96 \\ + 480 \\ \hline 576 \end{array}$$

32. $16^2 + 31^2 = 35^2$
 $256 + 961 = 1225$
 $1217 \neq 1225$
 not a right +

$$\begin{array}{r} 31 \\ \times 31 \\ \hline 31 \\ + 930 \\ \hline 961 \end{array}$$

34. $d_1 = \sqrt{(2+6)^2 + (2+4)^2}$
 $d_1 = \sqrt{64 + 36}$
 $d_1 = \sqrt{100}$

$$\begin{array}{r} \times 312 \\ 312 \\ + 624 \\ + 9360 \\ \hline 97344 \end{array}$$

$$\begin{array}{r} \times 313 \\ 313 \\ + 626 \\ + 9390 \\ \hline 97969 \end{array}$$

$$+ \begin{array}{r} 97344 \\ 625 \\ \hline 97969 \end{array}$$

36. $25^2 + 312^2 = 313^2$
 $625 + 97344 = 97969$
 a right +